



Innovation  
that excites

# NISSAN LEAF

Zero Emission



[Contents](#) | [Exterior design](#) | [Interior design](#) | [Technology & Performance](#) | [Style & Accessories](#) | [Technical Specifications](#) | [Price List](#)

[Print](#) | [Close](#)

[REQUEST A TEST DRIVE](#)





**HOW SMART IS THE NEW  
NISSAN LEAF? DISCOVER  
FOR YOURSELF.**

Discover the smart fluidity of the  
New Nissan LEAF. Charge it at  
home or on the go, control it with  
your smart phone and delight  
in the uncompromising comfort,  
outstanding technology and  
unexpected power of a genuine  
game-changer. The future just  
got real.



[REQUEST A TEST DRIVE](#)





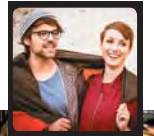
www.nissan-leaf.co.uk

6  
EXTERIOR DESIGN

"I bought my LEAF as a second car. I now drive it 95% OF THE TIME."



"I love the LEAF because it's the cheapest car to run of ANY car I've EVER owned."



"Carwings is very cool. I warm up my LEAF every morning without even leaving the house!"



## SPREAD THE WORD

**IT'S SURPRISING** what you can achieve in a car that's so clean it doesn't even have an exhaust pipe.

7  
LOOK & FEEL

REQUEST A TEST DRIVE



## DRIVE FOR CHANGE

**IT MAY LOOK FAMILIAR**, but it's revolutionary inside. Packed with innovation, New LEAF delivers a range of 124 miles (NEDC cycle). An all-electric, hi-tech eco-warrior right down to the tip of its aerodynamic nose, the New 100% electric Nissan LEAF is the purist's choice.

*"I have no reason to know what the price of a litre of petrol is anymore."*



*"I knew the LEAF would be energy efficient; I didn't expect it to be so much fun to drive."*

*"The car is saving me loads of money on petrol and maintenance, and electricity costs are minimal."*



[www.nissan-leaf.co.uk](http://www.nissan-leaf.co.uk)

8  
EXTERIOR DESIGN

9  
EXTERIOR DESIGN

10  
LOOK & FEEL

[Contents](#) | [Exterior design](#) | [Interior design](#) | [Technology & Performance](#) | [Style & Accessories](#) | [Technical Specifications](#) | [Price List](#)

[Page 1](#) | [Page 2](#) | [Page 3](#)

[Print](#) | [Close](#)

[REQUEST A TEST DRIVE](#)





**CHECK IN**

The New Nissan LEAF's 370L boot space is among the top in its category. Even with the BOSE® Sound System on the top of the range LEAF Tekna, you still have an impressive boot capacity of 355L.

**LOAD UP**

If you need more space, the rear seats are fully folding.



**ATTRACT  
THE CROWD**

**A FULL 5-SEATER** offering adjustable height in the front and increased leg-room in the back, New Nissan LEAF is a real crowd-pleaser. New LEAF also offers you the option of heated seats and steering wheel, keeping you warm in an energy efficient way. Choose from a full leather trim or a planet-loving bio-fabric made from sugar cane.

**REQUEST A TEST DRIVE**



## COOL TECH TOOLS

**YOUR DIGITAL DASHBOARD.** Login to New Nissan LEAF's control panel, dominated by beautiful blue-lit dials and a clear digital dash display. The elegant centre console with a 7" LCD screen completes the look of the future.



### EV ANALYTICS

The combimeter helps to maximise your range by instantly displaying energy consumption and regeneration, state of charge, remaining energy, capacity levels and distance-to-empty in an easy to read format.

### B-MODE DRIVING

Flick the mouse into B-mode and the hi-tech regenerative braking system will increase the energy recycled back into the power supply when you brake or decelerate.

### 360° VISION

Enjoy a crystal-clear view with the 360° Around View Monitor. Four wide-angled cameras offer a front, rear and/or side view as well as a bird's eye view for the ultimate ease of parking.

### ECO-SOUNDS

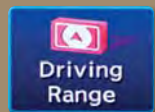
Ultra-compact and custom-designed for the New Nissan LEAF, the new BOSE® Energy-Efficient Series system delivers a powerful sound, whilst almost halving the usual amount of electricity needed. Maximise the benefit of Nissan LEAF's exceptionally quiet cabin by transforming it into a real auditorium.





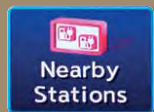
## IN SYNC NISSAN CARWINGS

**IT SUPPORT.** Connect New Nissan LEAF to your PC or smartphone with Carwings Intelligent Navigation System: activate charging, preset the air con or plan your eco-route at a distance - and compare your eco-driving skills with a global community of LEAF owners too! Carwings will help you to maximise your energy and get the most out of LEAF's range.



**Driving Range**

**DRIVING RANGE**  
Check you have enough range for your next journey without needing to top up.



**Nearby Stations**

**NEARBY STATIONS**  
Find the nearest charging station while you're on the road.



**Energy Information**

**ENERGY INFORMATION**  
Keep an eye on your energy consumption at all times.



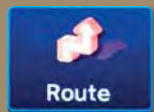
**Update Stations**

**UPDATE STATIONS**  
Instantly update Carwings with newly installed charging points.



**Charging Timer**

**CHARGING TIMER**  
Set the charging time start in your car, on your smartphone or PC. You can preset the air con or heating too.



**Route**

**ECO-ROUTING**  
Eco-routing will help you to maximise your range by planning the most energy efficient route.



### PC PLANNING

Plan your trip on your PC or smartphone and send it to your Nissan LEAF.



### CHARGING STATIONS

Receive details of all the nearest charging stations while you're driving.



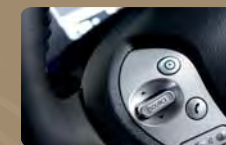
### REMOTE CHARGING

Activate charging from your PC or smartphone. Also check the battery charge level and reachable range. Nothing could be easier.



### ECO-DRIVING CHAMPION

Join a global community of eco-drivers and grow your own virtual forest.



### REACHABLE AREAS

One click on the steering wheel will reassure you can reach your destination.



### REMOTE AIR CON

Activate the air con from your PC or smartphone for a warm or chilled welcome.







## TAKE CHARGE NOW'S THE TIME

**CHOOSE YOUR CHARGE.** Stop for a quick charge en route, fill up at home or plug in at work.



### 1. RAPID CHARGER

**30 MINS.** Go from 0-80% in approximately half an hour; rapid charging is the fastest battery boost available, making life easier and longer trips possible. The national network of rapid chargers is expanding all the time, for example at Nissan dealers and motorway service stations.



### 2. HOME CHARGING UNIT

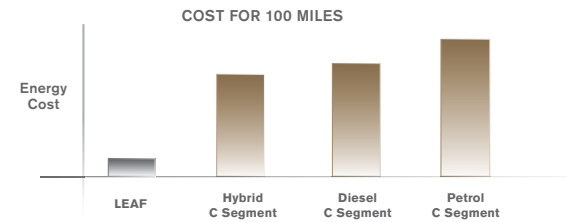
**4-8 HOURS.** Charge your Nissan LEAF overnight using a Home Charging Unit and reach full charge in approximately 8 hours, or even 4 hours with the optional 6.6kW on-board charger. Be sure to have your Home Charging Unit installed by an approved electrician.



### 3. CABLE + DOMESTIC PLUG

**12 HOURS.** Use your Nissan EVSE cable to charge your LEAF where you like – at public charging stations, at work or at home (so long as the domestic socket is on a professionally installed dedicated circuit). Providing 10A power, it will charge from empty to full in approximately 12 hours.

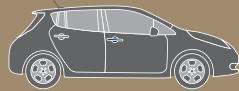
LEAF offers an extremely competitive cost of ownership package.



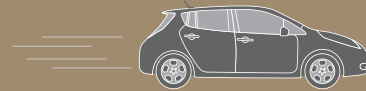
[www.nissan-leaf.co.uk](http://www.nissan-leaf.co.uk)



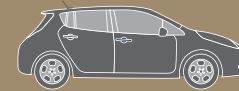
Wake up to a full 'tank'. All charged up and remotely pre-heated or cooled, LEAF is ready for action.



Whoosh! Nissan LEAF has no gears and has 100% available torque straightaway for a smooth, responsive and near-silent getaway.



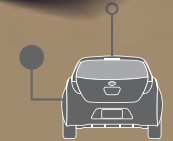
Enjoy zero emissions driving for less with zero VED, zero Benefit-In-Kind until 2015 and zero London Congestion Charge.



Thanks to its regenerative brakes, Nissan LEAF charges everytime you slow down. Red lights are your new best friend.



Take that important call with Bluetooth\*, then run those errands.



Just another day of zero emissions driving with LEAF. No petrol, no emissions. Back home, time to charge up during off-peak hours while sleeping.



**AIRBAGS.** Nissan's Advanced Airbag System includes dual-stage front airbags with seat belt sensors, front seat-mounted side impact airbags and roof-mounted curtain side impact airbags for front and rear seats.

## ARRIVE SAFELY

### A PROTECTED ENVIRONMENT.

Unsurprisingly, New Nissan LEAF is equipped with all the latest safety and security equipment.



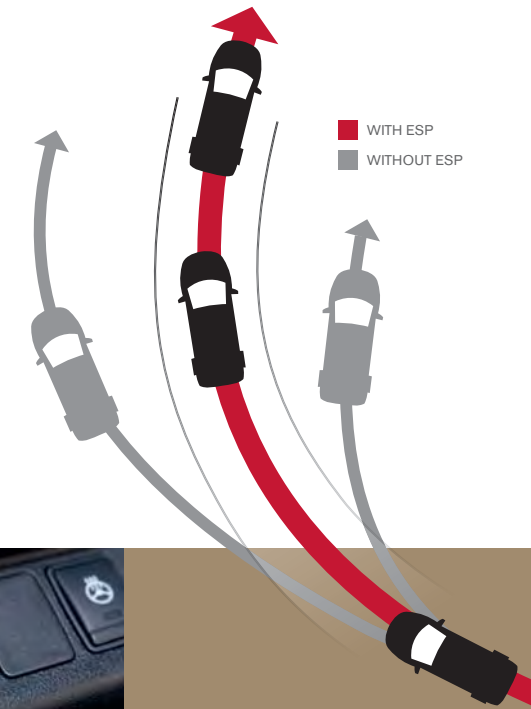
**AVM.** The 360° Around View Monitor helps you park safely and easily. Thanks to 4 wide-angled cameras, you can view your surroundings from a variety of angles including front & side, back & side and from above.



**LED LIGHTS.** The xenon-like performance of Nissan LEAF's LED lights are designed to brighten up your darkest moments while using half the energy of halogens.



**ESP.** The Electronic Stability Program keeps you in control. It senses the car's handling limits and, if needs be, reduces engine power or applies the brakes to avoid wheel spin.



[REQUEST A TEST DRIVE](#)





## ADD A PERSONAL TOUCH

**NISSAN GENUINE ACCESSORIES.** From chrome accents to illuminations, clever organisers to wow-factor wheels - customise your LEAF to suit you.

- 1) Wind deflectors
- 2) Chrome mirror caps
- 3) Chrome door sill strips
- 4) 17" alloy wheels
- 5) Chrome foglamp rings
- 6-8) Floor mats, front & rear



9) Illuminated entry guard  
10) Charging port lid cover

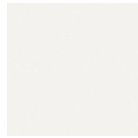
11) Cargo organiser  
12) Centre console insert

13) 16" accessory alloy wheel  
14) Soft trunkliner - compatible for LEAF with and without BOSE® Sound System.

## COLOURS



Pearl Black - **Z11**



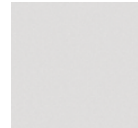
Arctic White solid - **326**



Magnetic Red metallic - **NAJ**

www.nissan-leaf.co.uk

## COLOUR YOUR ENERGY



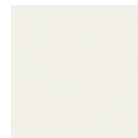
Universal Silver metallic - **KY0**



Gun Metal metallic - **KAD**



Mineral Blue metallic - **RBJ**



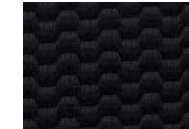
Pearl White - **QAB**

## TRIMS

## TAILOR YOUR TRIMS



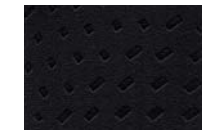
**BLACK**  
woven type fabric\*  
Visia



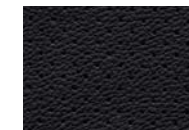
**LIGHT GREY**  
suede effect fabric\*  
Acenta



**BLACK**  
suede effect fabric\*  
Acenta

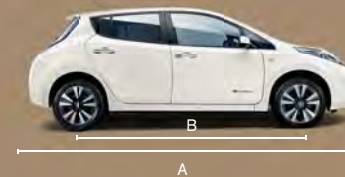


**BLACK**  
leather\*\*  
Tekna



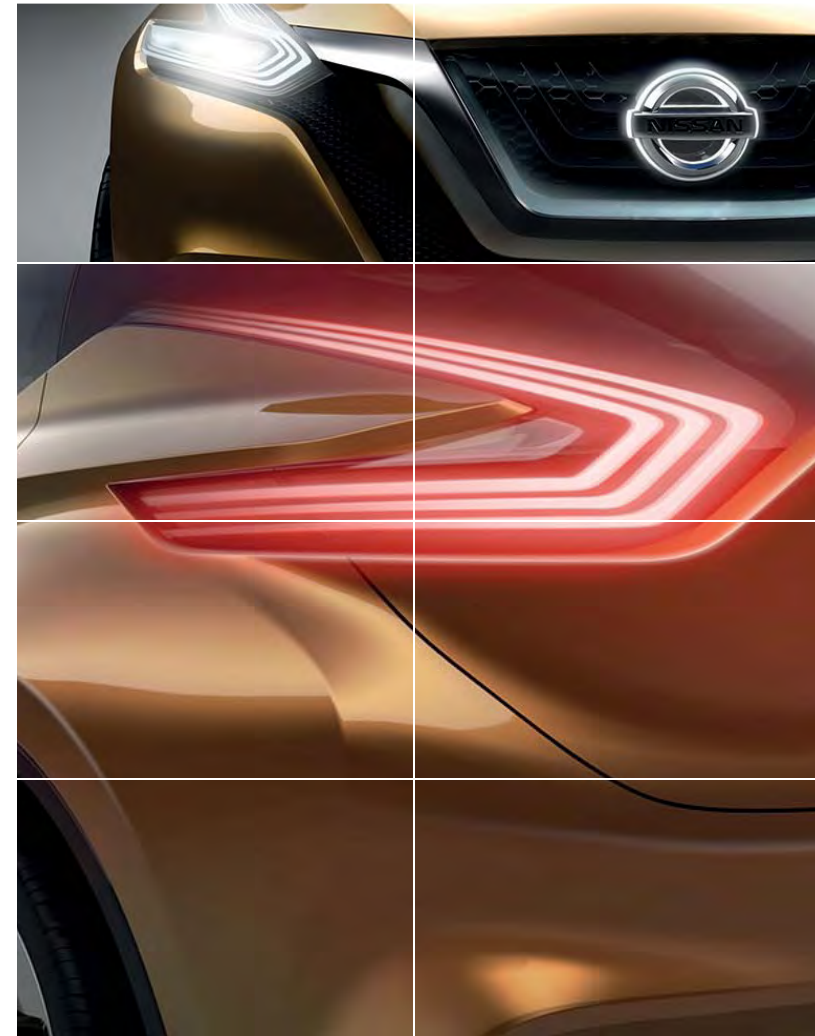
\*Bio Fabric  
\*\* Some parts of leather seats may contain artificial leather

## DIMENSIONS



A: Overall length: 4445mm  
B: Wheelbase: 2700mm  
C: Overall width: 1770mm  
D: Overall height: 1550mm





## AT NISSAN, YOU BRING OUT THE BEST IN US.

You spark our imagination. You provoke our creativity. You inspire us to change the rules and innovate. And at Nissan, innovation is not just about additions and extensions, it's about crossing the line to reinvent the status quo. It's about developing unexpected solutions to satisfy your wildest and most pragmatic desires. At Nissan, we design cars, accessories and services that break the mould - making the practical exciting and the exciting practical, to offer you a more exhilarating driving experience everyday.



### NISSAN LEAF OFFERS YOU:

5-YEAR / 60,000 MILES WARRANTY ON ALL EV DEDICATED COMPONENTS AND 3-YEAR / 60,000 MILES FOR STANDARD COMPONENTS

12-YEAR ANTI-CORROSION WARRANTY  
18,000 MILES / 12 MONTHS SERVICE INTERVALS

Nissan LEAF lithium-ion battery state of health warranty protects against battery capacity loss (less than 9 bars out of 12) as shown on the LEAF's capacity gauge for a period of 5 years / 60,000 miles.



Zero Emission

visit our website at: [www.nissan-leaf.co.uk](http://www.nissan-leaf.co.uk)

Follow Nissan LEAF on:



**NISSAN MOTOR GB LIMITED, The Rivers Office Park, Denham Way, Maple Cross, Hertfordshire, WD3 9YS**

Every effort has been made to ensure that the content of this publication is correct at the time of going to press (July 2013). This brochure has been produced featuring prototype vehicles exhibited at motor shows. In accordance with the company's policy of continuously improving its products, Nissan Europe reserves the right to change at any time the specification and the vehicles described and shown in this publication. Nissan dealers will be informed of any such modifications as quickly as possible. Please check with your local Nissan dealer to receive the most up-to-date information. Because of the limitations of the printing processes used, the colours shown in this brochure may differ slightly from the actual colours of the paint and interior trim materials used. All rights reserved. Reproduction in whole or part of this brochure without the written permission of Nissan Europe is forbidden.

This brochure is made from chlorine free paper – NISSAN LEAF Brochure – 07/2013 – Printed in EU. Part N° 99999-54110  
Created by NEW BBDO, France – Tel: +33 1 40 62 37 37 and produced by E-GRAPHICS\FRANCE, France – Tel: +33 1 49 09 25 35.

Dealer stamp:



Innovation  
that excites

# NISSAN LEAF



[REQUEST A TEST DRIVE](#)



## THE BEST JUST GOT BETTER

Be part of the electric revolution: Join over 65,000 100% electric Nissan LEAF owners already making the most of Zero Emissions driving across the globe.

Now built in Europe, we present the New 100% electric Nissan LEAF - the world's best selling Electric Vehicle.



## GRADES

### VISIA

5 DOOR  
80 KW AC ELECTRIC MOTOR  
SINGLE GEAR AUTO

#### AUDIO AND TECHNOLOGY

- Audio centre with 1CD, Bluetooth, iPod, USB
- 4 speakers
- Steering wheel mounted controls
- Regenerative braking system

#### COMFORT AND CONVENIENCE

- Start / stop power button
- Remote charging port opener
- Electric mirror adjustment
- Charging port illumination
- Rear wiper
- Front & rear power windows
- Eco drive mode
- Hill start assist
- Auto air conditioning (dial type)
- EVSE cable - 3 Pin, 10 Amp

#### EXTERIOR

- Intelligent Key
- Halogen headlamps
- Fog lamps
- Thatcham alarm

#### SAFETY

- ABS & EBD
- 6 airbags: front, side & curtain
- Vehicle Dynamic Control (VDC) and Traction Control System (TCS)
- 2 front 3 point seat belts with height adjusted, double pretensioner, load limiter and reminder
- 3 rear 3 point seat belts, ISOFIX x2
- Immobiliser
- EVSE charging cable locking
- Instant Mobility System (IMS)
- Vehicle Sound for Pedestrians (VSP)
- Daytime running lights

#### STYLING

- Black woven fabric trim
- Chromed door handles
- Black coloured wing mirrors
- 16" steel wheels with wheel trims

#### OPTIONS AT EXTRA COST

- Metallic paint
- 6.6kW on-board charger\* (includes 7-pin, Type 2, 32 Amp cable in lieu of 3 Pin, 10 Amp cable)
- Rapid Charge Port (allowing 50kW DC charging)
- NissanConnect with reversing camera

\*Allows home and public charging at 32 Amp

### ACENTA

5 DOOR  
80 KW AC ELECTRIC MOTOR  
SINGLE GEAR AUTO

#### ADDITIONAL TO VISIA GRADE

#### AUDIO AND TECHNOLOGY

- Nissan CARWINGS telematics system
- 7" colour screen
- 6 speakers
- Colour reversing camera

#### COMFORT AND CONVENIENCE

- B drive mode (enhances regenerative braking)
- Energy efficient auto air conditioning (digital type)
- Electric auto-folding mirrors
- Auto wipers & lights

#### EXTERIOR

- Headlamps with 'Follow Me Home' function
- Rapid Charge Port (allowing 50kW DC charging)

#### SAFETY

- Cruise control with speed limiter

#### STYLING

- Black or stone suede-effect trim
- Body coloured wing mirrors
- Privacy glass
- 16" alloy wheels

#### OPTIONS AT EXTRA COST

- Metallic paint
- 6.6kW on-board charger\* (includes 7 Pin, Type 2, 32 Amp cable in lieu of 3 Pin, 10 Amp cable)
- Solar cell spoiler
- Cold Pack (heated front & rear seats, heated steering wheel)

\*Allows home and public charging at 32 Amp

### TEKNA

5 DOOR  
80 KW AC ELECTRIC MOTOR  
SINGLE GEAR AUTO

#### ADDITIONAL TO ACENTA GRADE

#### AUDIO AND TECHNOLOGY

- BOSE 7 speakers system with subwoofer
- 360° Around View Monitor

#### COMFORT AND CONVENIENCE

- Heated front & rear seats
- Heated steering wheel
- Heated exterior mirrors

#### STYLING

- Full black leather trim\*\*
- 17" alloy wheels

\*Allows home and public charging at 32 Amp

\*\*Some parts of leather seats may contain artificial leather, please contact your dealer for full details.



# NEW LEAF

MODEL		LEAF
Body type		5 door hatchback
Available grades		Visia, Acenta, Tekna
Seating capacity	persons	5
ENGINE		
Engine code		EM57
Elec. Motor type		AC synchronous
Max. engine power <sup>1)</sup>	kW(PS)/min-1	80(109)/3008-10000rpm
Max. torque <sup>1)</sup>	Nm/min-1	254 /0-3008rpm
max RPM		10,500
Energy type		Electricity
BATTERY		
Type		Laminated lithium ion
Voltage	V	360
Capacity	kWh	24kWh, 48modules
Number of cells		192
CHARGER		
On-board charger		kW 3.6kW, 6.6kW(option)
Rapid Charging Capability		kW 50
Charging cable		6m long - 3.0kg
DRIVE TRAIN		
Clutch type (AT)		Automatic
Transmission code		RE1F61B
Gear ratio		Single Speed Gear Reduction
Final drive ratio (AT)		8.1938
Driven wheels		Front
CHASSIS		
Suspension front		Independent Mac Pherson strut
rear		Torsion beam axle
Steering		Electric power assisted
Braking system		CLZ31VE 283×28t
		AD11VE+DS17 292×16t
Stability control system (option)		ESP (Standard)
Wheel size (option)		6.5J 16 O/S:40 / 6.5J 17 O/S:45
Tyre size (option)		205/55R16 / 215/50R17
Tyre Make and model		

1) In accordance with 1999/99/EC.  
 2) Figures in accordance with EC Directive. Kerb weight condition is without driver and including coolant, oils, fuel, spare wheel and tools. Pay load will be reduced depending on the options and/or accessories installed.  
 3) In accordance with UN/ECE Regulation 101  
 4) Figures shown are with driver + 4 passengers and luggages and max. kerb weight.

# NEW LEAF

		80kW AC Electric Motor
LEAF		
Body type		5 door hatchback
Available grades		Visia, Acenta, Tekna
WEIGHTS & DIMENSIONS		
Kerb weight min./max. <sup>2)</sup> Visia Grade	kg	1474/1503
Kerb weight min./max. <sup>2)</sup> Acenta Grade	kg	1493/1519
Kerb weight min./max. <sup>2)</sup> Tekna Grade	kg	1512/1541
Gross Vehicle Weight	kg	1,945
Max. pay load <sup>2)</sup>	kg	395
Max axle load FR <sup>2)</sup>	kg	1,030
Max axle load RR <sup>2)</sup>	kg	960
Overall length	mm	4445
Overall width	mm	1770
Width, door mirror to door mirror	mm	1967
Overall height	mm	1545 / 1550
Wheelbase	mm	2700
FR Overhang	mm	952
RR Overhang	mm	788
Track front	mm	1540 / 1530
Track rear	mm	1535 / 1525
Min. Ground clearance	mm	100 / 108 (rear tyre deflector)
Turning radius	m	5.2 / 5.4
Towing capacity	kg	N/A
Roof load capacity	kg	N/A
Luggage capacity (VDA)	L	370 (std) / 355 (bose)
Luggage capacity (until roof)	L	911.6 (Lugg Floor to Head Liner)
max. with folded seats (VDA)	L	720L (to top of seats)
Cd		0.291 (16") / 0.289 (17")
PERFORMANCE		
Electricity consumption <sup>3)</sup>	Wh/km	150
Autonomy (NEDC) <sup>3)</sup>	km/miles	199 / 124
CO2 mass emission (Combined)	g/km	0
Max. speed	mph	16inch 87 mph 17inch 89 mph
Acceleration (0 - 62 mph)	sec	11.5
Min. turning circle (kerb to kerb)	m	16inch 10.4 17inch 10.8

1) In accordance with 1999/99/EC.  
 2) Figures in accordance with EC Directive. Kerb weight condition is without driver and including coolant, oils, fuel, spare wheel and tools. Pay load will be reduced depending on the options and/or accessories installed.  
 3) In accordance with UN/ECE Regulation 101  
 4) Figures shown are with driver + 4 passengers and luggages and max. kerb weight.



**You care about your Nissan so Nissan will care for you. That's why we'll make the following commitment:**

**YOU** care about staying on the road when your Nissan is in for service or repair.

**YOU** care about quality enough to have your Nissan serviced at a Nissan dealership.

**YOU** care about getting the best value for money when it comes to service and repair.

**YOU** care about having your problems resolved quickly.

**YOU** care about getting the right Nissan model, engine and gearbox to test drive.

**NISSAN** will keep you mobile free of charge.

**NISSAN** says thanks by giving you continuous AXA roadside assistance for free.

**NISSAN** will price match like for like competitor written quotes within 10 miles of your local dealer.

**NISSAN** will propose how to resolve any problem within two working days.

**NISSAN** will guarantee that's what you'll get when you pre-book your test drive either online or through our customer service centre.

**YOU + NISSAN**  
**CARE**

For terms and conditions, please visit [nissan.co.uk/care](http://nissan.co.uk/care)



INTRODUCING OUR

**commitment**  
TO YOU





Nissan. Innovation that excites.

Visit our website at:  
[www.nissan.co.uk](http://www.nissan.co.uk)

Dealer stamp:



Every effort has been made to ensure that the content of this publication is correct at the time of going to press ( June 2013 ). In accordance with the company's policy of continuously improving its products, Nissan Europe reserves the right to change at any time the specification and the vehicles described and shown in this publication. Nissan dealers will be informed of any such modifications as quickly as possible. Please check with your local Nissan dealer to receive the most up-to-date information. All rights reserved. Reproduction in whole or part of this brochure without the written permission of Nissan Europe is forbidden.

Part Number 99999-54099 Printed in the UK.

[REQUEST A TEST DRIVE](#)



[Contents](#) | [Exterior design](#) | [Interior design](#) | [Technology & Performance](#) | [Style & Accessories](#) | [Technical Specifications](#) | [Price List](#)

[Print](#) | [Close](#)

[Leaf Model and option prices](#) | [CO2 emissions](#)

[REQUEST A TEST DRIVE](#)



# NEW LEAF

Doorplan	Grade	Engine	Transmission	Basic Price	VAT	Total Retail	On The Road Price	On The Road Price after Government Incentive*
5 door	VISIA	80kW AC Electric Motor	Single Reduction Gear (Auto)	21,612.50	4,322.50	25,935	25,990	20,990
	ACENTA	80kW AC Electric Motor	Single Reduction Gear (Auto)	23,695.83	4,739.17	28,435	28,490	23,490
	TEKNA	80kW AC Electric Motor	Single Reduction Gear (Auto)	25,362.50	5,072.50	30,435	30,490	25,490

Basic and Total Retail includes delivery to the dealership and number plates. On the road price includes £55 government first registration fee.

\* Government applied Ultra Low Carbon Car Consumer Incentive (referred to as 'Government Incentive') of £5000 can be applied to LEAF sales between January 2011 and May 2015.



# NEW LEAF FLEX - (Battery Leasing)

Doorplan	Grade	Engine	Transmission	Basic Price	VAT	Total Retail	On The Road Price	On The Road Price after Government Incentive*
5 door	VISIA FLEX	80kW AC Electric Motor	Single Reduction Gear (Auto)	17,445.83	3,489.17	20,935	20,990	15,990
	ACENTA FLEX	80kW AC Electric Motor	Single Reduction Gear (Auto)	19,529.17	3,905.83	23,435	23,490	18,490
	TEKNA FLEX	80kW AC Electric Motor	Single Reduction Gear (Auto)	21,195.83	4,239.17	25,435	25,490	20,490

Basic and Total Retail includes delivery to the dealership and number plates. On the road price includes £55 government first registration fee.

\* Government applied Ultra Low Carbon Car Consumer Incentive (referred to as 'Government Incentive') of £5000 can be applied to LEAF sales between January 2011 and May 2015.

# Price excludes obligatory monthly battery rental

Monthly Battery Rental including VAT		Annual Mileage*				
		7,500 miles	9,000 miles	10,500 miles	12,000 miles	15,000 miles
Contract Term*	36 months and over	£70	£77	£85	£93	£109
	24 months	£80	£87	£95	£103	£119
	12 months	£90	£97	£105	£113	£129

\* Additional combinations of contract term and annual mileage are available.

Monthly Battery Rental includes Roadside Assistance for all breakdowns. Battery Lease contract provided by RCI Financial Services Ltd t/a Nissan Finance and is subject to status. Excess mileage is charged at £7.50 incl VAT/100 miles or part thereof. Terms and conditions apply. Please contact your local Nissan dealer for further details

# NEW LEAF OPTIONS

	VISIA	ACENTA	TEKNA	Basic	VAT	Total
Metallic or pearlescent paint	<input type="radio"/>	<input type="radio"/>	<input type="radio"/>	437.50	87.50	525
Rear roof spoiler with solar cells		<input type="radio"/>	<input type="radio"/>	216.67	43.33	260
Rapid Charge Port (allowing 50kW DC charging)	<input type="radio"/>	<input checked="" type="radio"/>	<input checked="" type="radio"/>	416.67	83.33	500
NissanConnect with rear view camera	<input type="radio"/>			666.67	133.33	800
6.6 kW on board charger* (allowing home and public charging at 32AMP)	<input type="radio"/>	<input type="radio"/>	<input type="radio"/>	708.33	141.67	850
Cold Pack (heated steering wheel, front and rear seats)		<input type="radio"/>	<input checked="" type="radio"/>	250.00	50.00	300
<b>Protection Pack</b> ▪Velour carpet mats ▪Mudguards - front and rear ▪Soft trunkliner	<input type="checkbox"/>	<input type="checkbox"/>	<input type="checkbox"/>	<b>125.00</b>	<b>25.00</b>	<b>150</b>
<b>Protection Pack Premium</b> ▪Mudguards ▪Luxury mats ▪Trunk liner	<input type="checkbox"/>	<input type="checkbox"/>	<input type="checkbox"/>	<b>208.33</b>	<b>41.67</b>	<b>250</b>
Tailgate entry guard	<input type="checkbox"/>	<input type="checkbox"/>	<input type="checkbox"/>	83.33	16.67	100
Body side mouldings (set of 4)	<input type="checkbox"/>	<input type="checkbox"/>	<input type="checkbox"/>	157.68	31.54	189
Mudguards (set of 4)	<input type="checkbox"/>	<input type="checkbox"/>	<input type="checkbox"/>	141.67	28.33	170
Illuminated entry guard (set of 2)	<input type="checkbox"/>	<input type="checkbox"/>	<input type="checkbox"/>	210.89	42.18	253
Hologram entry guard (set of 2)	<input type="checkbox"/>	<input type="checkbox"/>	<input type="checkbox"/>	140.83	28.17	169
Seat covers	<input type="checkbox"/>	<input type="checkbox"/>	<input type="checkbox"/>	241.67	48.33	290
Dog guard	<input type="checkbox"/>	<input type="checkbox"/>	<input type="checkbox"/>	183.33	36.67	220
Cargo organizer	<input type="checkbox"/>	<input type="checkbox"/>	<input type="checkbox"/>	236.29	47.26	284
Standard mats (textile)	<input type="checkbox"/>	<input type="checkbox"/>	<input type="checkbox"/>	29.17	5.83	35
Velour mats	<input type="checkbox"/>	<input type="checkbox"/>	<input type="checkbox"/>	40.83	8.17	49
Soft trunk liner with /without BOSE® system	<input type="checkbox"/>	<input type="checkbox"/>	<input type="checkbox"/>	79.17	15.83	95
Chrome Pack (mirror caps, strip door sills, foglamp rings)	<input type="checkbox"/>	<input type="checkbox"/>	<input type="checkbox"/>	316.66	63.33	380

\*Mode 3 Type 2 cable supplied with car in lieu of 10A EVSE with 3 pin plug  
32A home charging requires a 32A Home Charging Unit

Optional -  Standard -  Optional Dealer Fit -

# CO2 MASS EMISSIONS AND VEHICLE EXCISE DUTY

Vehicle	Engine	Transmission	Body Style	CO <sub>2</sub> Mass Emissions g/km	12 months Vehicle Excise Duty*
LEAF	80kW AC Electric Motor	Single Reduction Gear (Auto)	5 door	0	£0

\* Determined by CO<sub>2</sub> emissions figure and fuel type - see "Further information". NB. Navara VED is fixed at £220 as it is considered a commercial vehicle.

[REQUEST A TEST DRIVE](#)





## NISSAN MOTOR (GB) LIMITED

The Rivers Office Park  
Denham Way  
Maple Cross  
Rickmansworth  
Hertfordshire  
WD3 9YS

Visit our website at: [www.nissan.co.uk](http://www.nissan.co.uk)

Dealer stamp:



Part Number: 99999-54129

Prices effective from 1st February 2014 unless otherwise stated